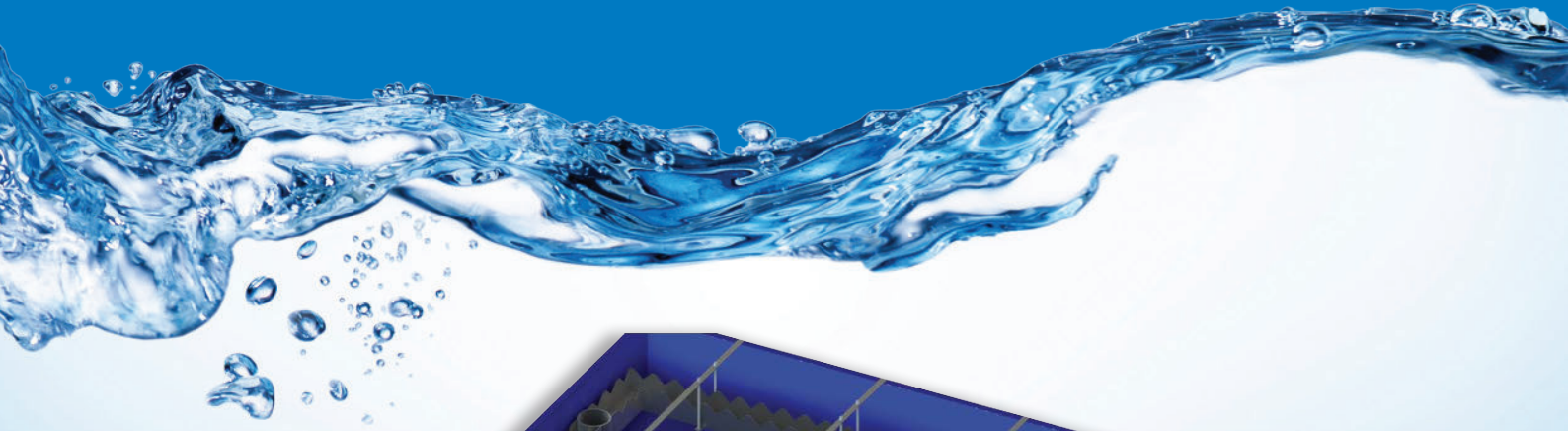


Lamella Settlers



FILTEC Lamella Settlers have a series of inclined tubes at a 60° angle that allow the suspended floc to settle at the base of the tube, and the decanted water to flow at the top of the tube. By dividing the flow, a greater settling rate can be achieved with a significantly smaller footprint and capital cost than other systems.

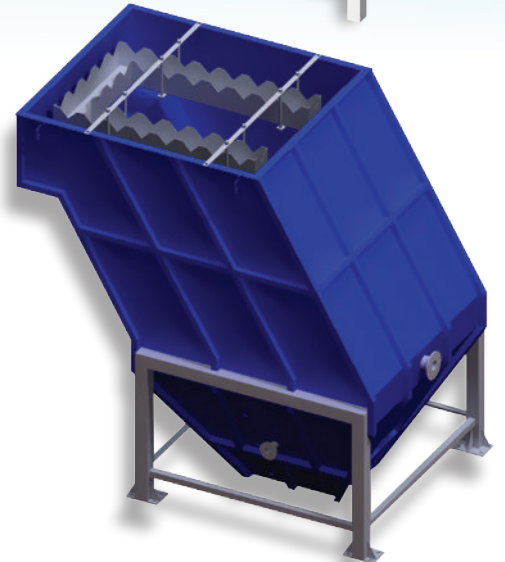
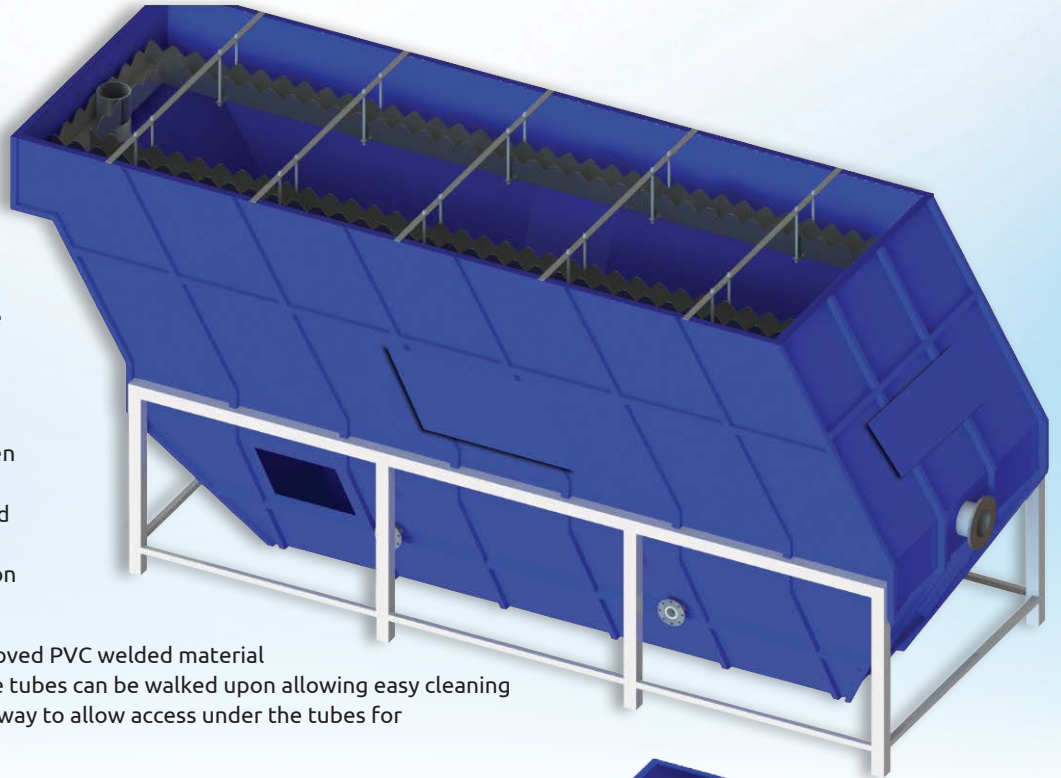
Filtration Technology have several proven FILTEC Lamella Settler designs. The vessels are fabricated from epoxy coated mild steel. They come with flow distribution at the inlet, sludge extraction devices and stainless steel launders.

The tubes are fabricated from NSF approved PVC welded material that is specifically sized for the tank. The tubes can be walked upon allowing easy cleaning of the tubes. All tanks come with a man way to allow access under the tubes for maintenance.

A series of valves on the side of the vessel allow easy inspection of the sludge level. Various methods are available to provide automated sludge level feedback, which can be discussed upon enquiry.

Some larger vessels have a design that allows them to be broken down in the middle and easily transported within a 40 foot shipping container to site. They also come with an optional walkway to allow for easy inspection of the process performance.

Filtration Technology has the in-house design and build capabilities to incorporate these tanks into a complete package plant system with floc tanks, sludge removal, chemical dosing, pipework and pumping.



Capacity (m ³ /hr)	Approximate dimensions (m)
25	2.90 x 1.85 x 3.05 high
50	4.15 x 2.15 x 3.10 high
80	6.5 x 2.15 x 3.35 high
110	7.15 x 2.35 x 3.35 high

Filtration Technology also offers a range of Polymer Makeup Units to complement the Lamella Settlers.

For more information, or enquiries please email: info@filtec.co.nz, or phone: 09 274 4223

www.filtec.co.nz

FILTEC
Making Water Safer

Auckland
102A Carbine Road
Mt Wellington
Auckland 1060
Telephone: 09 274 4223
Email: info@filtec.co.nz

Wellington
Unit 4, 98 Main Road
Tawa
Wellington 5028
Telephone: 09 274 4223
Email: filtecwn@filtec.co.nz

Christchurch
1/1 Halls Place
Middleton
Christchurch 8024
Telephone: 09 274 4223
Email: filtec-chch@filtec.co.nz

Dunedin
145 Main South Road
Green Island
Dunedin 9018
Telephone: 03 488 6200
Email: filtecdn@filtec.co.nz